




Geography

Rainforests

A world map with a light blue background and black outlines for continents. The map is divided into horizontal bands of color representing climate zones: pink for the polar regions (Arctic and Antarctic), yellow for the temperate zones, and green for the tropical zones. The equator is marked by a horizontal line. The title 'The Rainforest Climate' is overlaid on the map, centered over the tropical regions.

The Rainforest Climate

twinkl



Aim

- I can identify areas of the world containing rainforests.
- I can explain the key aspects of a rainforest climate.

Success Criteria

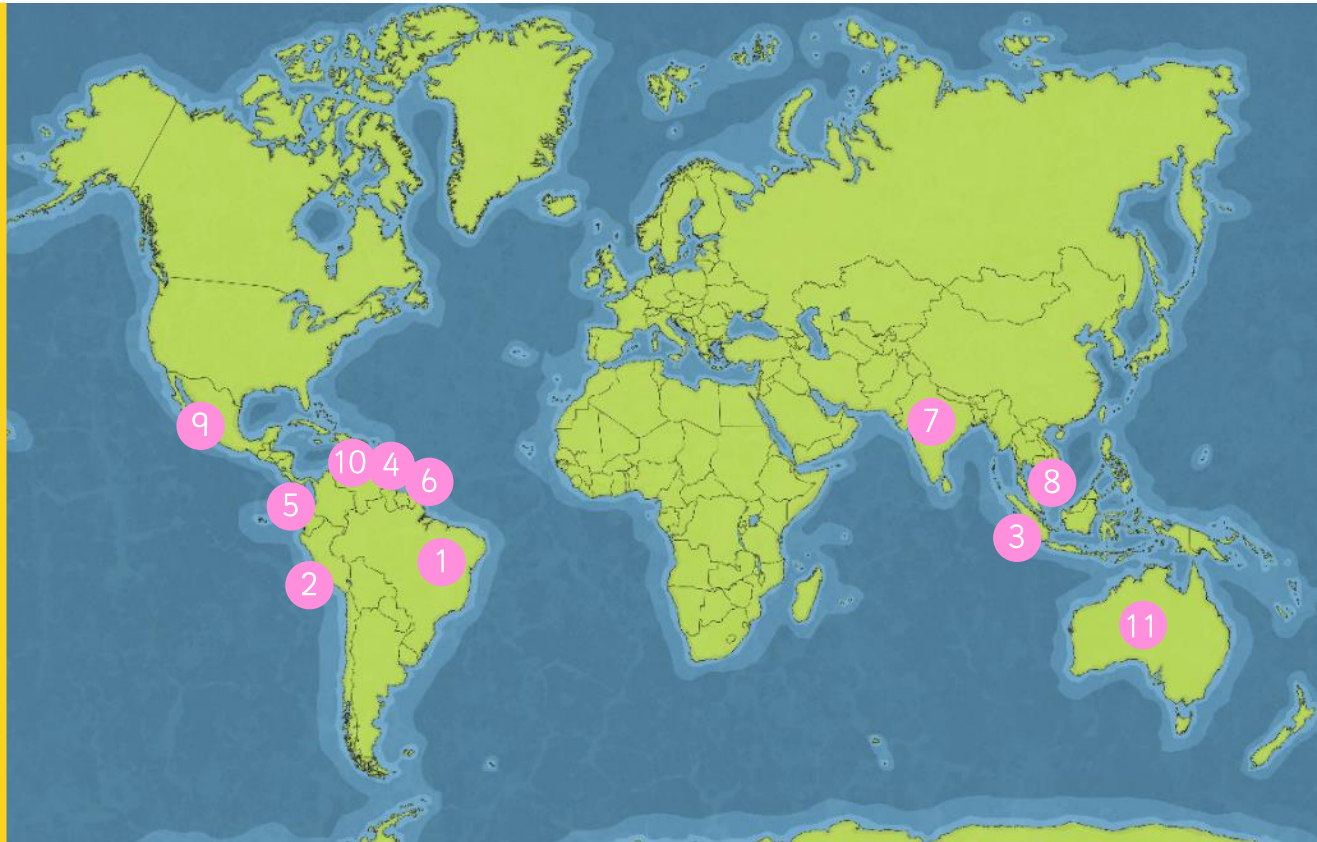
- I can find the Equator on a map.
- I can tell you that rainforests are found near the Equator.
- I can find the tropics of Cancer and Capricorn on a map.
- I can tell you that rainforests are found between the tropics of Cancer and Capricorn.
- I can tell you the difference between weather and climate.
- I can describe what the weather is usually like in a tropical climate.

Can You Remember Where Rainforests Are Found?

Can you find each country?



- 1 Brazil
- 2 Peru
- 3 Indonesia
- 4 Bolivia
- 5 Ecuador
- 6 Guyana
- 7 India
- 8 Malaysia
- 9 Mexico
- 10 Venezuela
- 11 Australia



What Do You Notice?



What do you notice about the location of most rainforests?



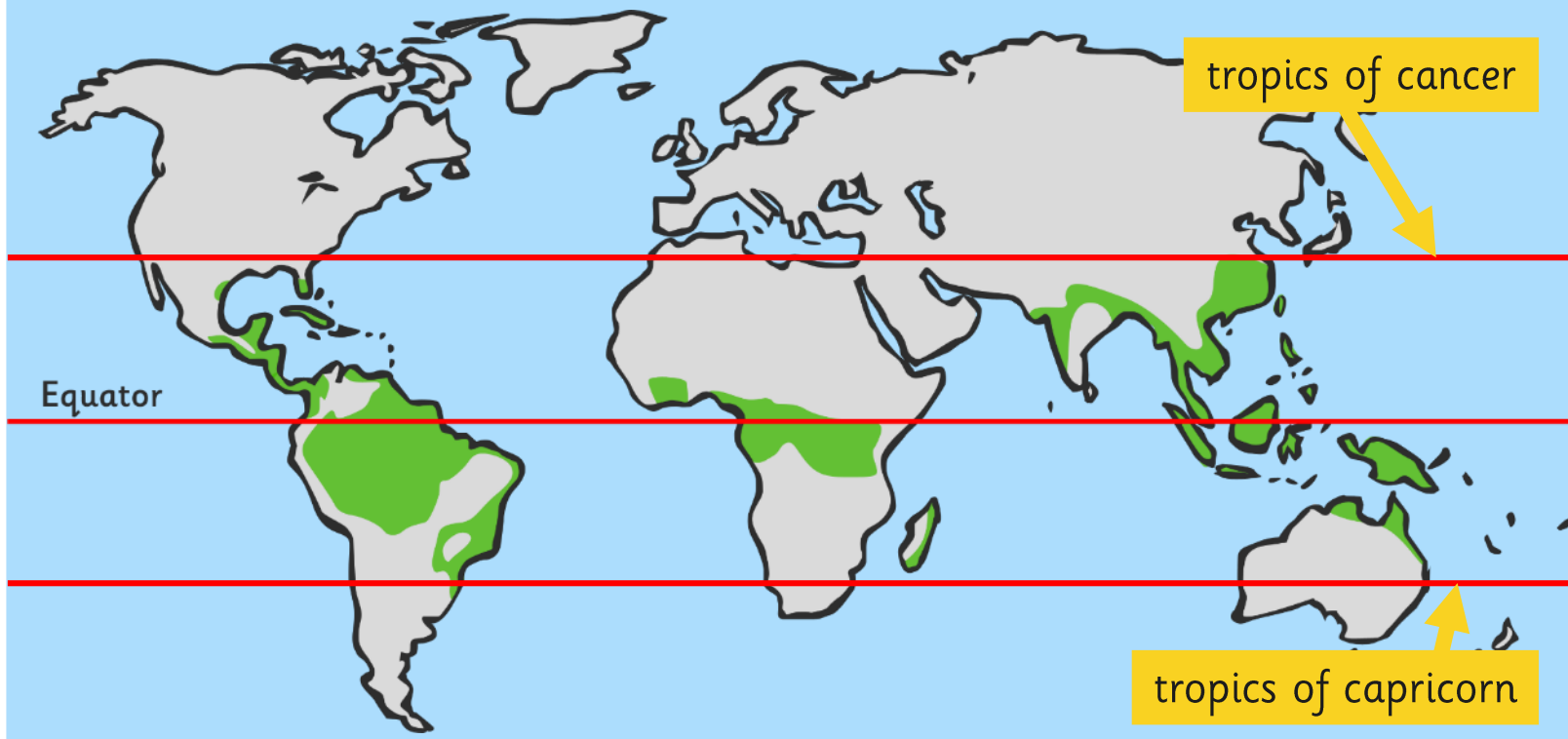
What's this line called?

Rainforests are found near to the equator.

What Do You Notice?



What do you notice about the location of most rainforests now? Can you describe their location even more precisely?

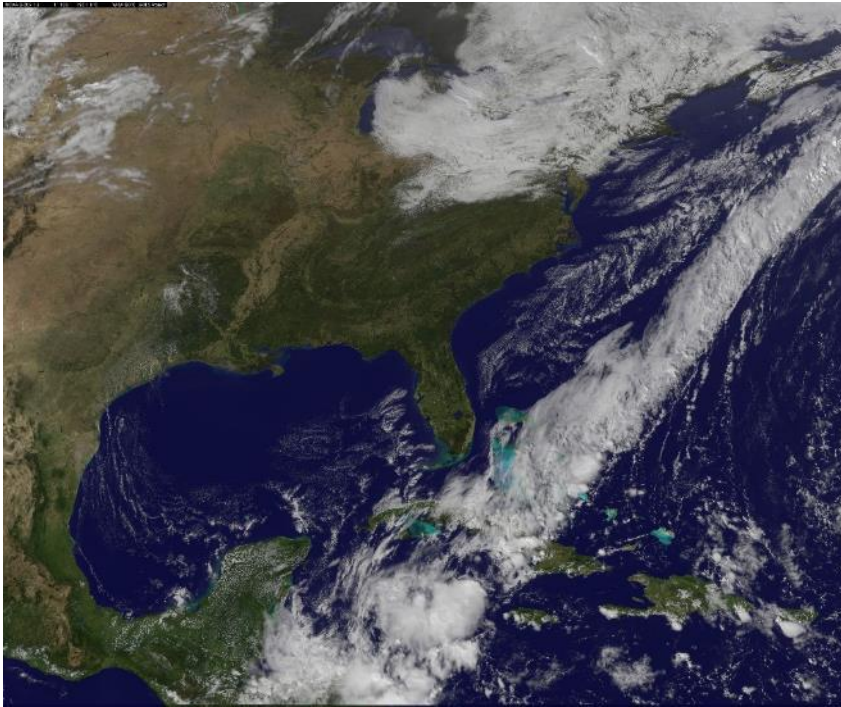


Rainforests are found between the Tropics of Cancer and Capricorn.

Climate and Weather



What is the difference between weather and climate?



Climate is the usual or average weather conditions over a long period of time.

Weather is the specific condition on a given day (which may or may not be typical for a climate).

Photo courtesy of gsfc@flickr.com - granted under creative commons licence - attribution

What Is the Climate of a Rainforest?

There are no seasons – the climate is the same all year round.

Every month has an average rainfall of at least 6cm.

It usually rains every day.

Temperatures are hot all year round.

It is very humid.



What's the Weather Like?



Read through the information about the climate of a rainforest area.




Make notes about what the weather might be like there today.

Cut out the symbols you will need.

Practise reading your weather report.


Weather Symbols Sheet

Cut out the weather symbols that match your forecast and use them to help you when presenting your forecast.



Rainforest Weather Forecast

Location Name	Average Rainfall (per month)
Singapore	19cm
Average Temperature (Day)	Average Temperature (Night)
35°C	27°C
Windspeed	Humidity
2mph	89%




Where is your city located? Mark it on this world map so you know where to point when you give your forecast.

Now you're ready to prepare your forecast.

Decide:

- who will introduce the forecast;
- what facts you will share with the class;
- who will read each section;
- where you will need to point on the map;
- how you will sum up your forecast.

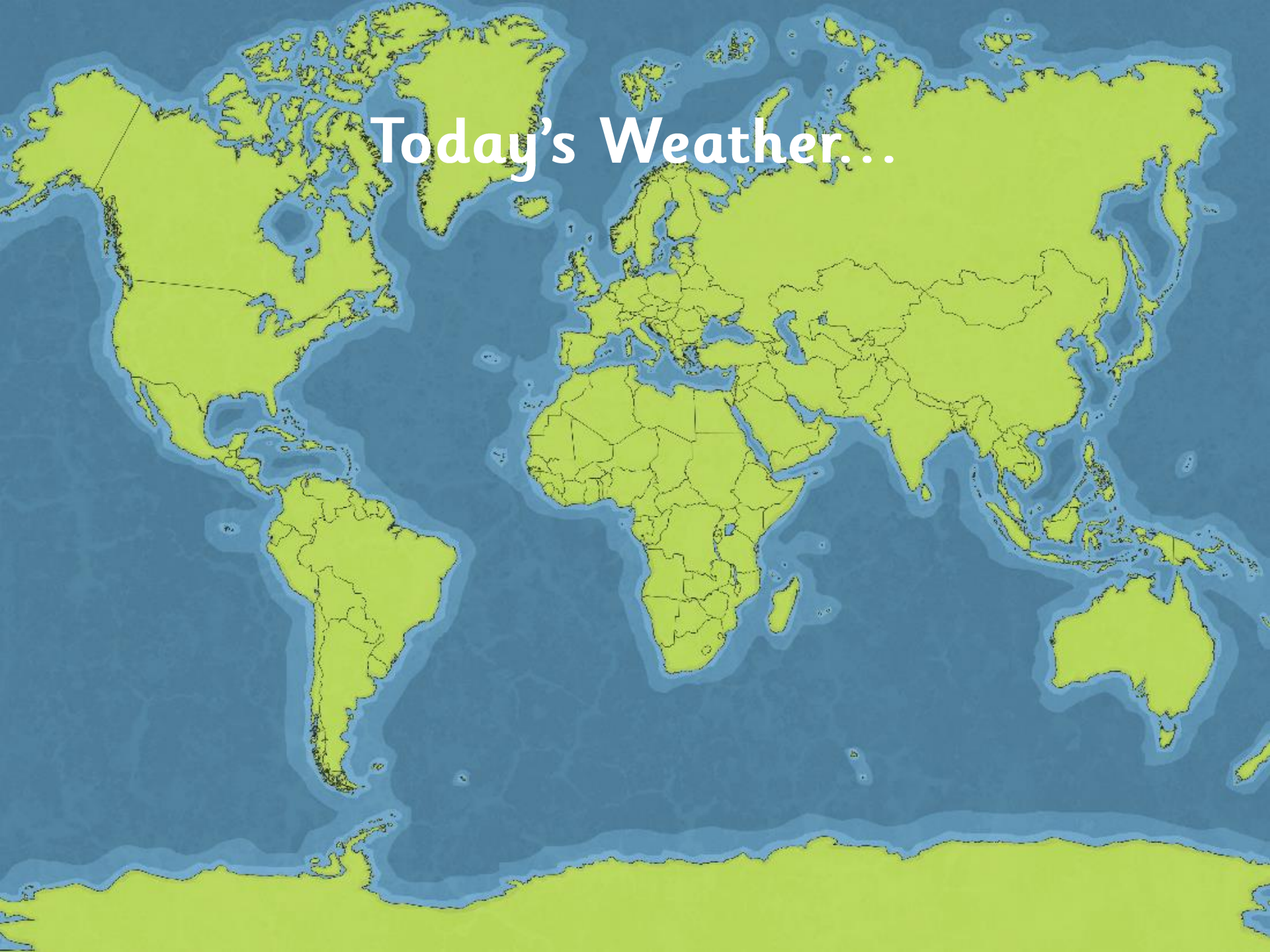


planit

twinkl.co.uk

Geography | Year 3 | Rainforests | The Rainforest Climate | Lesson 2

Today's Weather...



Aim



- I can identify areas of the world containing rainforests.
- I can explain the key aspects of a rainforest climate.

Success Criteria

- I can find the Equator on a map.
- I can tell you that rainforests are found near the Equator.
- I can find the tropics of Cancer and Capricorn on a map.
- I can tell you that rainforests are found between the tropics of Cancer and Capricorn.
- I can tell you the difference between weather and climate.
- I can describe what the weather is usually like in a tropical climate.

