

Cedar class residential

Northumberland 2026



The details

- Where? – Northumberland
- When? – Wednesday 17th – Friday 19th June 2026
- 2 nights, 3 days
- Transport – coach which will stay with us for the whole trip (toilet onboard!)

Accommodation – YHA The Sill at Hadrian's Wall

- Rooms for groups of 2 or 4 children
- All rooms will be on one private corridor – restricted access
- All rooms automatically lock from the inside
- All children will have their own bed - bunk beds
- Some rooms are en-suite and some have a shared bathroom on the same corridor
- Full board (breakfast, packed lunch and dinner) provided by the Youth Hostel



Bedroom



Bathroom
with shower



Dining room



Communal
area

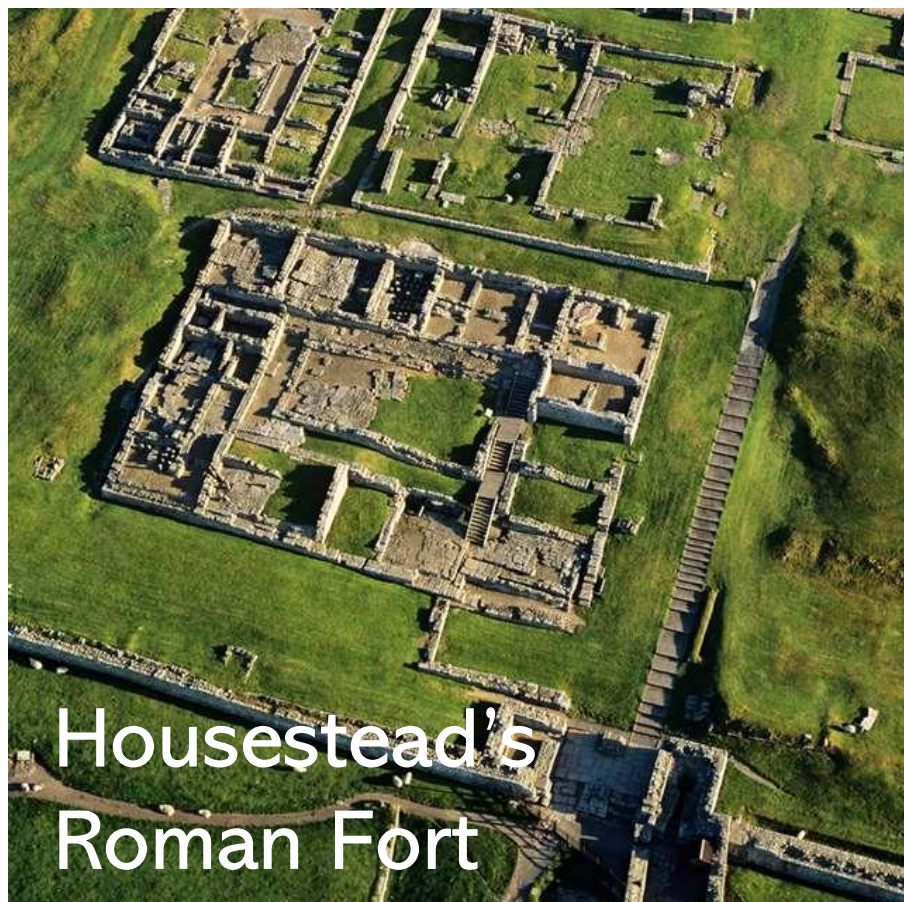
Food

- Dinner, breakfast and packed lunches are provided by the Youth Hostel
- Breakfast – full English and/or continental option
- Packed lunch – sandwiches are ordered in advance (ham, cheese, egg, chicken or tuna sandwich plus crisps, biscuit bar and fruit)
- Dinner – pasta, jacket potato, sausage and mash, burger and chips, beef chilli plus dessert!
- Children will need a packed lunch for the first day and will buy dinner at the service station on the way home



Day 1 - Wednesday

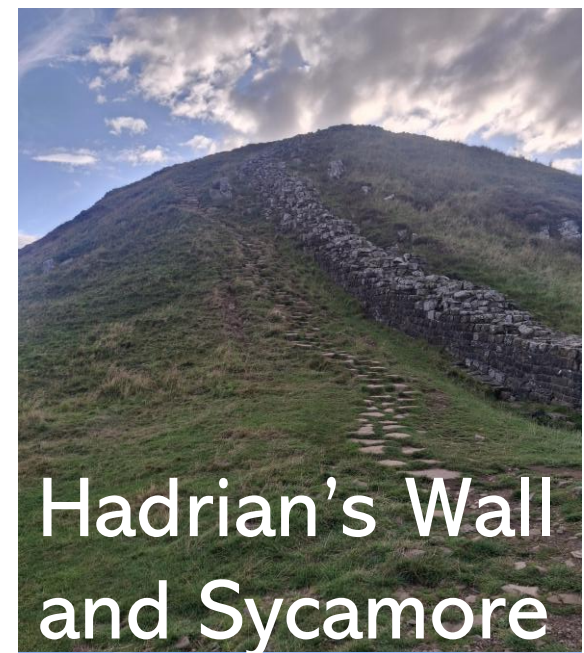
- Depart school – 7am (children will need a packed lunch)
- Visit to Housestead's Roman Fort
- Discovery session led by Roman Soldier
- Visit to Roman Army Museum
- Check in and dinner at the hostel
- Evening – walk along Hadrian's Wall to the Sycamore Gap memorial



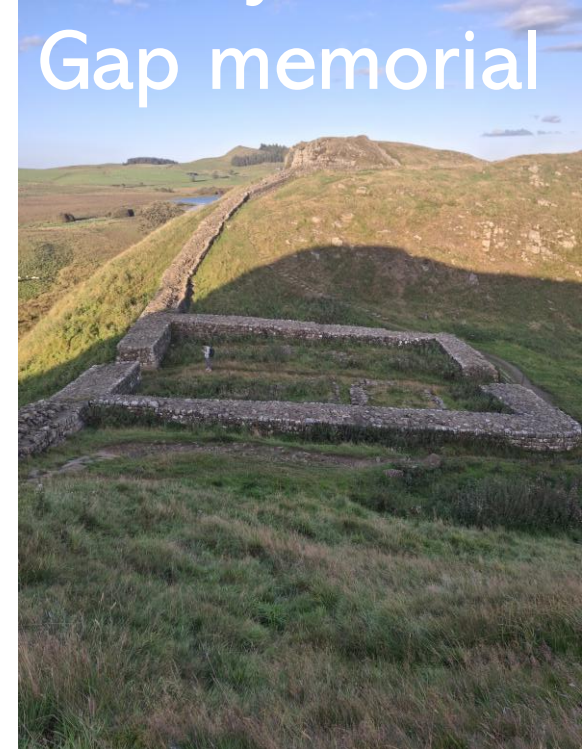
Housestead's
Roman Fort



Roman Army
Museum

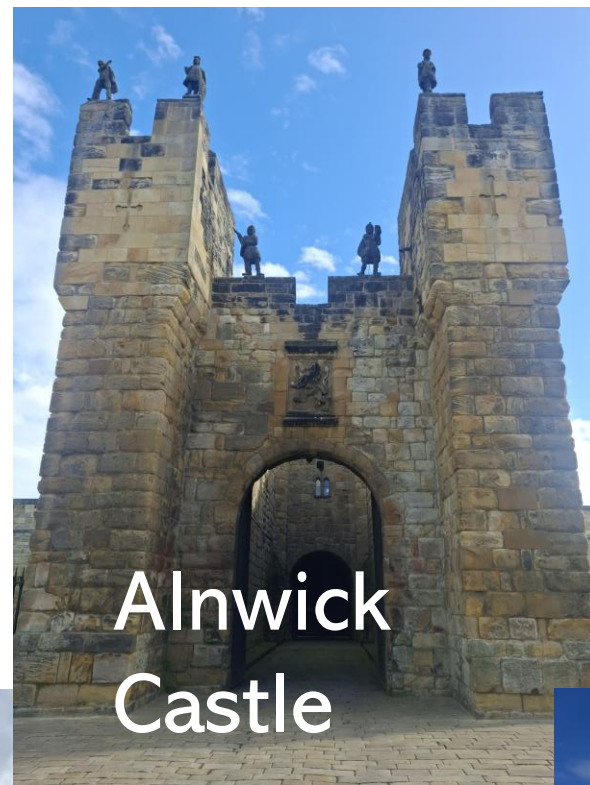


Hadrian's Wall
and Sycamore
Gap memorial



Day 2 - Thursday

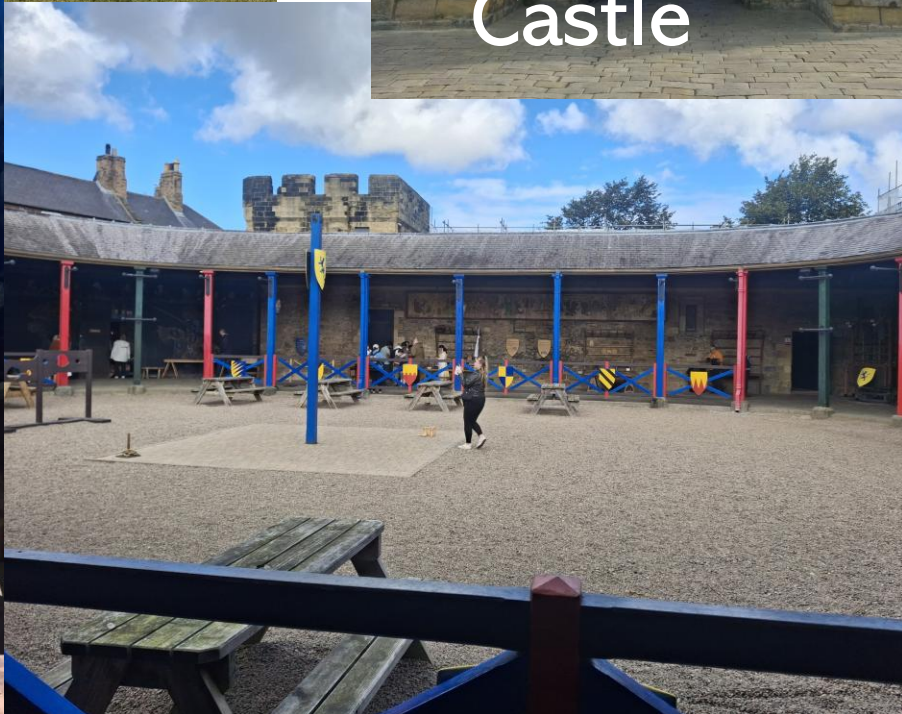
- 8am – Breakfast in the Youth Hostel
- Visit to Alnwick Castle
- Dragon Quest experience
- ‘Castle Life’ workshop
- Broomstick training!
- Free time on the beach at Alnmouth
- Evening – games and crafts at the Youth Hostel



Alnwick
Castle



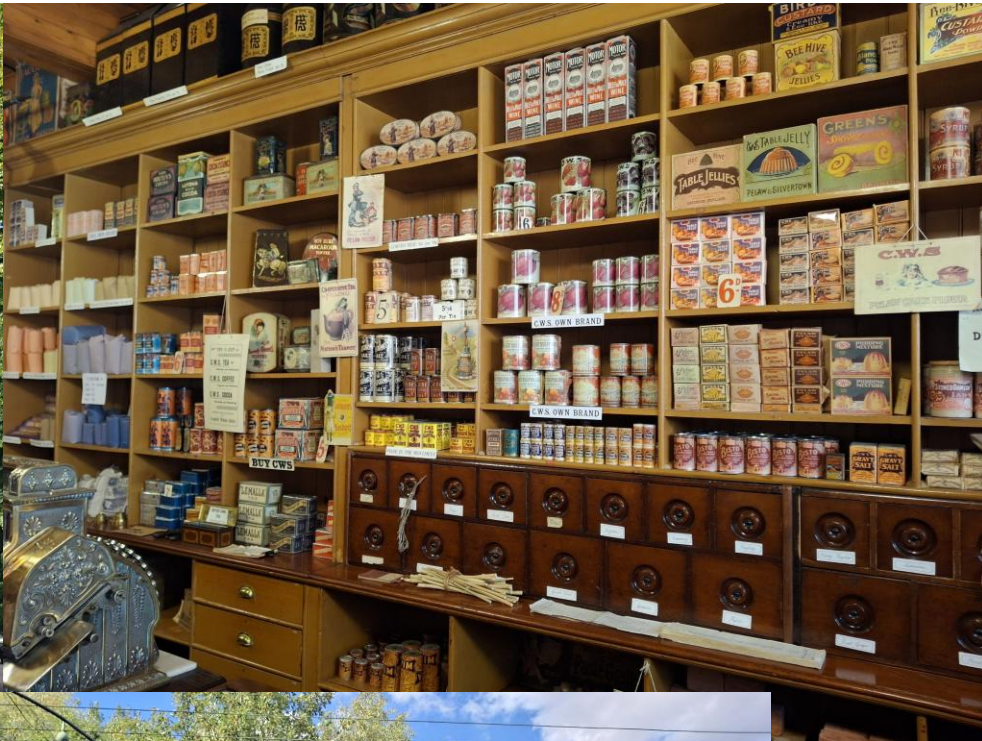
Dragon
Quest



Alnmouth
Beach

Day 3 - Friday

- 7.30am – Breakfast and pack up
- Visit to 'The Sill' visitors centre
- Depart from the Youth Hostel
- Visit to Beamish Living Museum
- Stop at Leeds Skelton Lake services for tea
- Return to school – approximately 7pm



Beamish Museum

Cost

- Between £270 and £300 plus £20 spending money (ice cream, fairground at Beamish Museum, gift shop at Alnwick Castle and dinner on the way home)
- We are working to keep the cost of the trip as low as possible and will confirm this in the letter we are sending out next week